



纵览全局 · 共赢未来

Overview of the global win-win future



**无锡固架五金制品有限公司**

**Wuxi Gujia Hardware Products Co., Ltd.**

地址: 无锡惠山区前洲镇石幢工业园67号  
电话: 0510-83396720  
传真: 0510-83396719  
国内销售1: 151 9021 6608 (薛小姐)  
国内销售2: 139 1529 8381 (徐小姐)  
国内销售3: 159 5157 2935 (徐小姐)  
外贸销售1: 183 5157 6407 (薛小姐)

Add: No. 67, Shizhu Industrial Park, Qianzhou Town,  
Huishan District, Wuxi  
Tel: +86-510-83396720  
Mobile Phone: +86 183 5157 6407  
Fax: +86-510-83396719  
E-mail: wxgj1@wxgj.com.cn  
Web: <http://www.wxgj.com.cn>

投诉电话: 150 5068 5728  
邮箱: [wxgj@gjwjzp.com](mailto:wxgj@gjwjzp.com)  
邮箱: [szh1976@163.com](mailto:szh1976@163.com)  
网址: [www.gjwjzp.com](http://www.gjwjzp.com)

[www.gjwjzp.com](http://www.gjwjzp.com)

**无锡固架五金制品有限公司**  
Wuxi Gujia Hardware Products Co., LTD.

# C COMPANY INTRODUCTION

## 企业简介

无锡固架五金制品有限公司专业生产线棒（丰田管、钢塑管、固架管，也叫覆塑管、精益管）、线棒夹头、流利条以及相关零配件，是集产品制造、销售、服务为一体的生产制造型企业。

线棒是制作物流容器、工位器具、仓储货架、搬运设备、生产线等系列产品（或系统）环保、低成本的首选材料，尤其被广泛应用于摩托汽车、电子产品、半导体等制造业的精益管理，提高效率的同时最大限度地节省空间、劳动力成本及管理成本。

线棒的应用是没有行业限制的，它还具有安装简易、低劳动力成本优势，只要放飞想象力，就可以自己动手制作自己喜欢的产品。

为了更好地服务广大客户，我司提供从规划、设计到生产制造的一站式服务。期待与您的合作！

Wuxi Gujia Hardware Products Co.,Ltd is a manufacturer of pipe racking system.The main products are lean pipe(plastic coated pipe),metal joint,roller tracker and the related accessories & services.

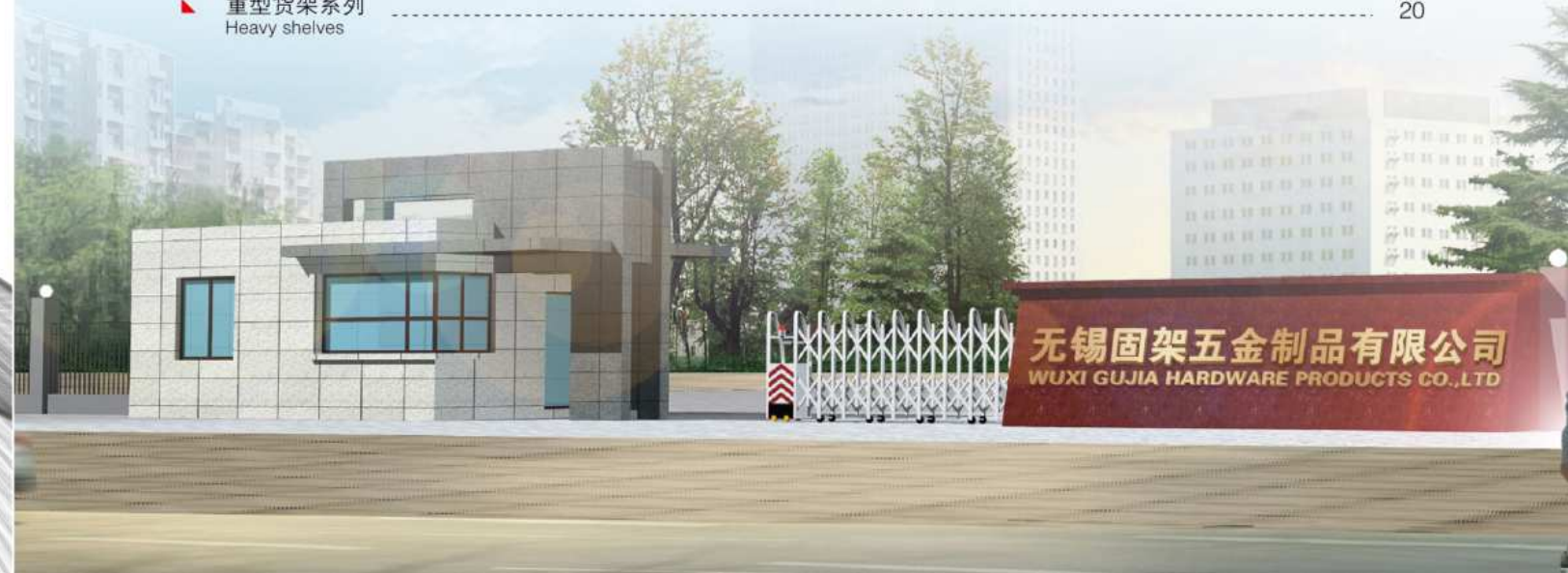
The pipe racking system is simple,demountable and recyclable.All the system is made of plastic coated pipe,Metal joints,casters or roller tracks,and all the components depend on your requirement to show your real Brainstorm by DIY.Our products are widely applied in Logistics container,Workstation,Storage shelves,Handling equipments series,etc.

The factory is seated in Wuxi City,next to Shanghai.Welcome to visit us!

## CATALOGUE

### 目录

▶ P系列(线棒) Pipe	01
▶ H系列(单片接头) Monolithic joint	02
▶ HJ系列(金属接头) Metal joint	05
▶ 流利条系列产品 Fluent strip products	07
▶ 线棒配件 Wire rod accessories	09
▶ JC系列(脚轮) Casters	11
▶ 工作台板 Working table	12
▶ 工作台系列 Workbench series	13
▶ 货架系列 Shelf series	14
▶ 流利条货架系列 Fluent strip shelf series	15
▶ 生产线系列 Production line series	16
▶ 周转车系列 Turnover car series	17
▶ 不锈钢管/铝合金线棒系列 Stainless steel tube / aluminum alloy rod series	18
▶ 其他系列 Other series	19
▶ 重型货架系列 Heavy shelves	20



线棒 ( 又称精益管或覆塑管 )

Lean pipe(Plastic coated pipe)



线棒管 ( 精益管 ) 技术说明 Technical Instructions for Line Bar Pipe(Lean Pipe)

Material / 材料	外部塑料层 / plastics + 中间钢管 / steel tube + 内部防锈涂层 / rust proof layer
outer diameter / 外径	φ 28mm
Inside diameter / 内径	φ 21.6mm~24mm
Thickness / 钢管壁厚	0.8mm, 1.0mm, 1.2mm, 1.5mm, 2.0mm
Colour / 颜色	白 / White、黑 / black、红 / red、黄 / yellow、蓝 / blue、绿 / green
Specifications / 规格	L=4000mm



塑钢管长度=外尺寸B-103mm=中中心距尺寸A-70mm  
Plastic pipe length = outer dimension B-103mm = center-to-center distance dimension A-70mm

测试参数

Test parameter

长度 length	壁厚 length	0.8mm	1.0mm	1.2mm	1.5mm	2.0mm
400mm		165kgf	215kgf	260kgf	305kgf	365kgf
900mm		85kgf	100kgf	135kgf	180kgf	220kgf
1000mm		78kgf	100kgf	120kgf	140kgf	170kgf
1100mm		75kgf	97kgf	112kgf	133kgf	165kgf
1300mm		65kgf	84kgf	104kgf	101kgf	134kgf
1500mm		55kgf	70kgf	85kgf	86kgf	101kgf

备注:

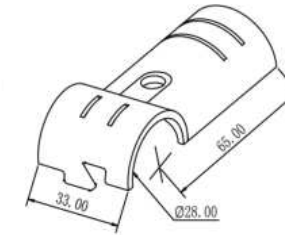
- 1、以上承载为理论承载量;
- 2、承载环境为常温常压, 空气酸碱度为中性;
- 3、上述默认材质为Q235B, 允许挠度变形为L/180;
- 4、测试速度小于5mm/分钟;
- 5、承载结构为简支梁结构。

Remarks:

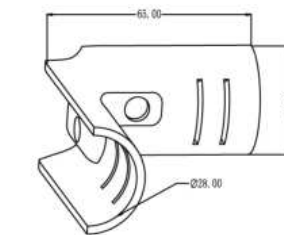
- 1, the above load is the theoretical load;
- 2, the carrying environment is normal temperature and pressure, and the air pH is neutral;
- 3, the above default material is Q235B, allowing deflection to L/180;
- 4, the test speed is less than 5mm / minute;
- 5, the bearing structure is a simple support beam structure.

接头分电泳、镀锌、镀铬

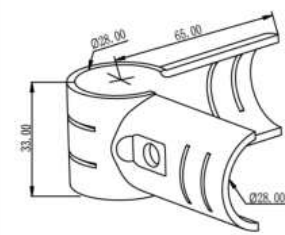
Joint electrophoresis, galvanizing, Chrome plating



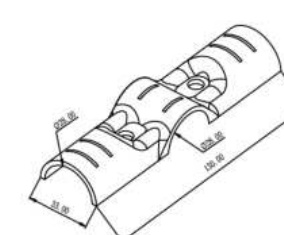
Model/型号	H-1
Name/名称	Single joint/单接头
Material/材质	SPCC/冷轧钢
Weight/重量	64g/2.3~2.5mm



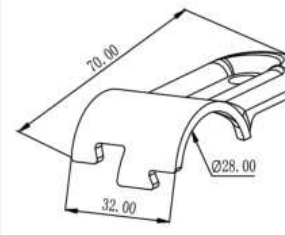
Model/型号	H-2
Name/名称	Single joint/单接头
Material/材质	SPCC/冷轧钢
Weight/重量	85g/2.3~2.5mm



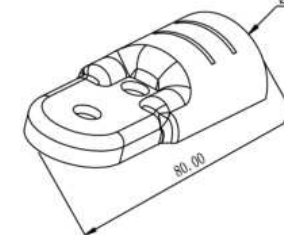
Model/型号	H-3
Name/名称	Single joint/单接头
Material/材质	SPCC/冷轧钢
Weight/重量	113g/2.3~2.5mm



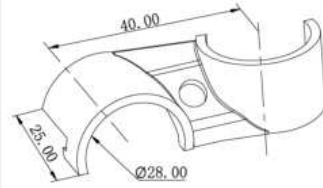
Model/型号	H-4
Name/名称	Single joint/单接头
Material/材质	SPCC/冷轧钢
Weight/重量	102g/2.3~2.5mm



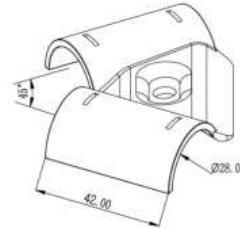
Model/型号	H-5
Name/名称	Single joint/单接头
Material/材质	SPCC/冷轧钢
Weight/重量	41g/2.3~2.5mm



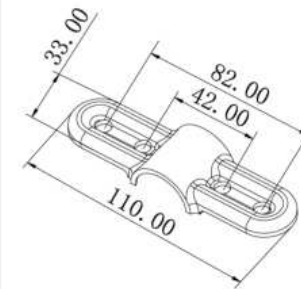
Model/型号	H-6
Name/名称	Single joint/单接头
Material/材质	SPCC/冷轧钢
Weight/重量	55g/2.3~2.5mm



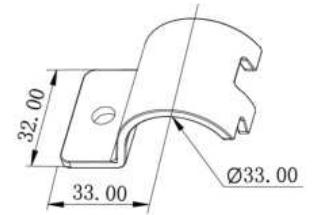
Model/型号	H-7
Name/名称	Single joint/单接头
Material/材质	SPCC/冷轧钢
Weight/重量	43g/2.3~2.5mm



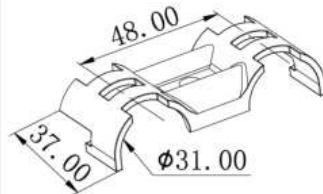
Model/型号	H-8
Name/名称	Single joint/单接头
Material/材质	SPCC/冷轧钢
Weight/重量	62g/2.3~2.5mm



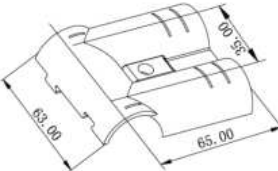
Model/型号	H-14
Name/名称	Single joint/单接头
Material/材质	SPCC/冷轧钢
Weight/重量	62g/2.3~2.5mm



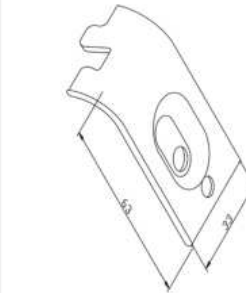
Model/型号	H-15
Name/名称	Single joint/单接头
Material/材质	SPCC/冷轧钢
Weight/重量	38g/2.3~2.5mm



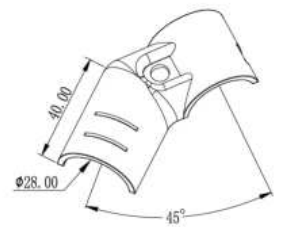
Model/型号	H-9
Name/名称	Single joint/单接头
Material/材质	SPCC/冷轧钢
Weight/重量	64g/2.3~2.5mm



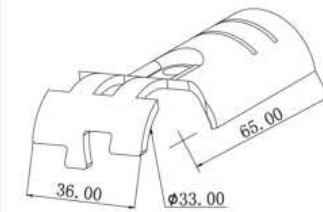
Model/型号	H-10
Name/名称	Single joint/单接头
Material/材质	SPCC/冷轧钢
Weight/重量	130g/2.3~2.5mm



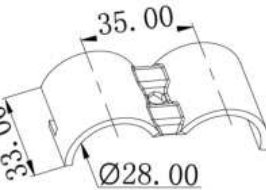
Model/型号	H-16
Name/名称	Single joint/单接头
Material/材质	SPCC/冷轧钢
Weight/重量	37g/2.3~2.5mm



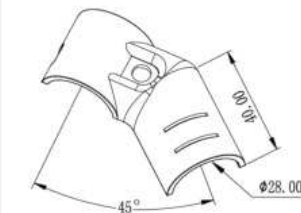
Model/型号	H-17
Name/名称	Single joint/单接头
Material/材质	SPCC/冷轧钢
Weight/重量	64g/2.3~2.5mm



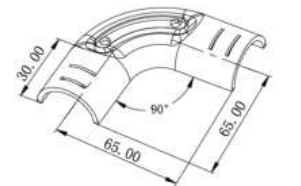
Model/型号	H-12
Name/名称	Single joint/单接头
Material/材质	SPCC/冷轧钢
Weight/重量	62g/2.3~2.5mm



Model/型号	H-13
Name/名称	Single joint/单接头
Material/材质	SPCC/冷轧钢
Weight/重量	50g/2.3~2.5mm



Model/型号	H-18
Name/名称	Single joint/单接头
Material/材质	SPCC/冷轧钢
Weight/重量	63g/2.3~2.5mm



Model/型号	H-90
Name/名称	Single joint/单接头
Material/材质	SPCC/冷轧钢
Weight/重量	93g/2.3~2.5mm



H-1X2+M6X1

HJ-1



H-2X1+H-3X1+M6X2

HJ-2



H-2X2+H-4X1+M6X3

HJ-3



H-4X2+M6X2

HJ-4



H-2X4+M6X4

HJ-5



H-7X2+M6X1

HJ-6



H-5X2+H-6X2+M6X2

HJ-7



H-9X2+J-140X2+M6X1

HJ-8



H-17X1+H-18X1+M6X1

HJ-9



H-12X2+J-140X1+M6 X1

HJ-10



H-13X2+M6X1

HJ-11



H-6X4+H-14X2+M6 X6

HJ-12



H-15X1+H-16X1+M6 X1

HJ-13



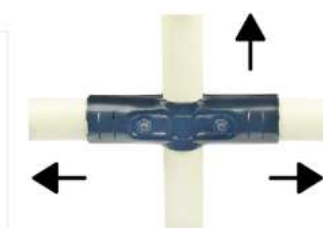
H-8X2+M6X1

HJ-15



H-90X2+M6X2

HJ-16



· Chuck

· Used cold rolled steel plate

· The horizontal and vertical grip of the chuck is 64kg

· The test is carried out at room temperature and the traction rate is 5mm/min

· Chuck clamping load test: The ultimate load of the chuck under the following test conditions is 80kg

· Overlay tube support · Centralized load-bearing

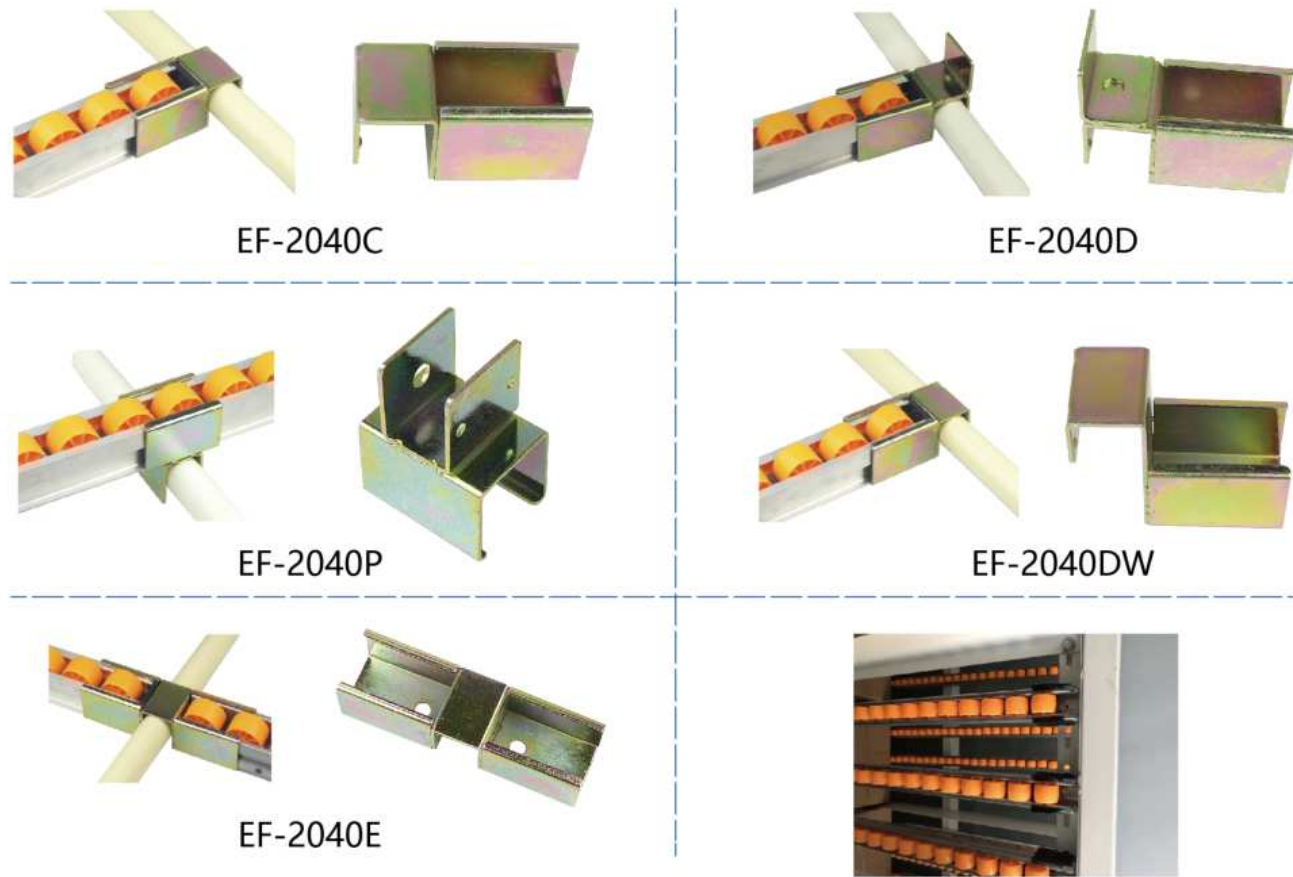
· Load loading speed 50mm/min · Ambient temperature: 20° C

\*The above is the laboratory test data, the actual use load should not exceed 80% of the test data.

- 夹头
- 使用冷轧钢板制作
- 夹头水平及垂直握紧力为64kg
- 测试在室温下进行且牵引速率为5mm/min
- 夹头夹紧承重测试:
- 夹头在以下测试条件下极限载荷80kg
- 覆盖管筒支撑 · 中央集中承重
- 载荷加载速度50mm/min · 环境温度:20℃
- \*以上为试验室测试数据, 实际使用载荷不应超过测试数据的80%。

因其安装方便快捷，放置于上方的物品运行流畅利索，顾名思义称为流利条。其多用于车间物料架等使用。流利条主要用于仓储，货架配套产品，可用作滑道，护栏，导向装置。流利条是用型钢与滚轮滑道组成配套专用货架，广泛应用于工厂的装配生产线和物流配送中心的分拣区域内，尤其是可与数字式分拣系统结合起来，大大提高物料的分拣配送效率。

Because of its convenient and fast installation, the items placed on the top run smoothly and smoothly. As the name suggests, it is called a fluent bar. It is mostly used for workshop materials and other uses. Flow bars are mainly used for storage, shelf supporting products, can be used as slides, guardrails, guide devices. Fluency bar is a special shelf composed of type steel and roller slide. It is widely used in the sorting area of the assembly line and logistics distribution center of the factory. It can be combined with digital sorting system to greatly improve the material sorting and distribution efficiency.



**40\*35加强钣金流利条** 40 \* 35 enhance sheet metal fluent article

	Framing / 镀锌钢板框架: 宽40mm*高35mm Thickness / 镀锌钢板厚度: 0.8mm Wheel / ABS PE滚轮: $\phi$ 33mm*20mm Axis spacing / 滚轮轴间距: 40mm Bear the weight of / 单只滚轮承载: 10kg	Height / 总高 (含滚轮): 42.5mm Material quality / 滚轮轴: 45#钢镀锌 25只 滚轮/米 每米承载: 100kg

**40\*35铝合金流利条** 40 \* 35 aluminium alloy fluent article

	Framing / 铝合金框架: 宽40mm*高35mm Thickness / 铝合金框架厚度: 1.2mm Wheel / PE / ABS滚轮: $\phi$ 33mm*20mm Axis spacing / 滚轮轴间距: 40mm Bear the weight of / 单只滚轮承载: 10kg	Height / 总高 (含滚轮): 42.5mm Material quality / 滚轮轴: 45#钢镀锌 25只 滚轮/米 每米承载: 100kg

**60\*25加强钣金流利条** 60 \* 25 enhance sheet metal fluent article

	Framing / 镀锌钢板框架: 宽60mm*高25mm Thickness / 镀锌钢板厚度: 1.0mm Wheel / PE滚轮: $\phi$ 15mm*42mm Axis spacing / 滚轮轴间距: 16mm Bear the weight of / 单只滚轮承载: 20kg	Height / 总高 (含滚轮): 30mm Material quality / 滚轮轴: 45#钢镀锌 62只 滚轮/米 每米承载: 200kg

**60\*33加强钣金流利条** 60 \* 33 enhance sheet metal fluent article

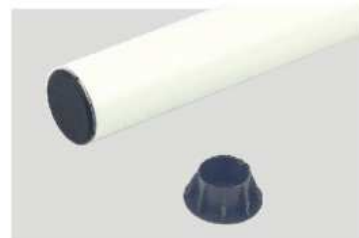
	Framing / 镀锌钢板框架: 宽60mm*高33mm Thickness / 镀锌钢板厚度: 0.8mm Wheel / PE滚轮: $\phi$ 30mm*42mm Axis spacing / 滚轮轴间距: 36mm Bear the weight of / 单只滚轮承载: 20kg	Height / 总高 (含滚轮): 44mm Material quality / 滚轮轴: 45#钢镀锌 28只 滚轮/米 每米承载: 200kg

**85\*33加强钣金流利条** 85 \* 33 enhance sheet metal fluent article

	Framing / 镀锌钢板框架: 宽85mm*高33mm Thickness / 镀锌钢板厚度: 1.2mm Wheel / PE滚轮: $\phi$ 45mm*55mm Axis spacing / 滚轮轴间距: 50mm Bear the weight of / 单只滚轮承载: 60kg	Height / 总高 (含滚轮): 50mm Material quality / 滚轮轴: 45#钢镀锌 20只 滚轮/米 每米承载: 800kg



不锈钢管专用端盖  
Stainless steel tube end cap



端盖  
End cover



地脚套  
Foot cover



塑料卡槽  
Plastic card slot



塑料接头  
Plastic joint



脚轮夹板  
Wheel splint



挂钩  
Hook



衬套  
Bushing



标签卡扣  
Tab card clasp



金属双边管夹  
Metal binder



金属单边管夹  
Metal unilateral CLIP



标签卡座  
Tab holder



螺丝  
Screw



M8-螺丝  
M8-Screw



大金属可调地脚  
Large metal adjustable feet



塑料桌面卡扣  
Plastic desktop clasp



线束分割器  
Wirebeam splitter



桌面平垫圈  
Desktop flat washer



大钢塑可调地脚  
Large steel plastic adjustable foot



小钢塑可调地脚  
Small steel plastic adjustable foot



小金属地脚  
Small metal foot



流利条刹车片  
Fluent brake pads



M12螺母  
M12 nut



牵引挂钩  
Traction hook



轮子材料 Wheel material	轮径 Wheel diameter	轮宽 Wheel width	承重 Load-Bearing	安装高度 Install Height	
	示意图 sketch map	mm	KG	mm	mm
聚氨酯 polyurethane	3" ( 75 )	32	80	108	108
白色尼尼 White Nini	4" ( 100 )	32	90	130	130
灰色人造胶 Gray artificial glue	5" ( 125 )	32	100	156	156

高强度密度板 High strength density plate



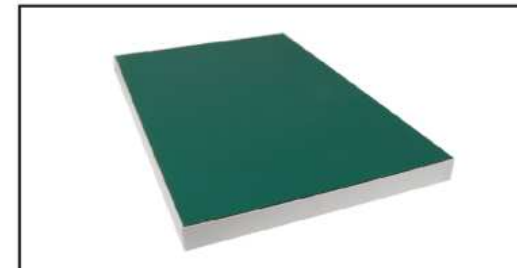
<b>特性及应用</b> 采用混合材料高温合成 耐磨不易变形 具良好经济性 用于工作台及层板 可采用不同类型贴面	<b>Features and Applications</b> High temperature synthesis using mixed materials Wear resistance is not easy to deform Good economy For worktables and laminates Different types of patches can be used
---	---

三聚氰胺板 High strength density plate



<b>特性及应用</b> 双面贴三聚氰胺 表面光滑 防水 用于工作台及层板	<b>Features and Applications</b> Double sided Melamine Smooth and waterproof surface For worktables and laminates
--	--

防静电台面 Static Radio Panel



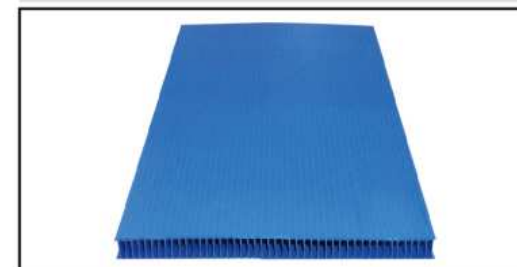
<b>特性及应用</b> 防静电胶垫 适用于电子产品抗静电 表面平整光滑 表面电阻值为10的6-9次方欧姆	<b>Features and Applications</b> Anti-static pads For electronic anti-static products Smooth and smooth surface 6-9cifangoumu with surface resistance of 10
---	---

不锈钢贴面 Stainless steel veneer



<b>特性及应用</b> 使用于进化及防磁场 表面光滑, 防腐蚀 具防火, 防潮性能 耐酸碱及耐磨	<b>Features and Applications</b> Used in evolution and magnetic field protection Smooth surface, corrosion resistant Fire proof, moisture proof Acid and alkali resistance and wear resistance
---	--

中空板 Middle board



<b>特性及应用</b> 耐冲击、精度高 防潮、防腐蚀 适用于高强度要求台面或层板	<b>Features and Applications</b> Impact resistance, high precision Anti-moisture, anti-corrosion Applicable to high strength requirements table or laminate
--	--



